
General Catalogue

Products



Line products

Piles

Bored piles (LDP)

- SR, STM & Cranes attachment rigs range

Continuous Flight Auger piles (CFA)

- SF & SR range

Cased Augered & Secant Piles (CAP/CSP)

- SR range

Displacement Piles (DP)

- SR range

Micropiles

- SM range

Diaphragm Walls

Hydraulic & Mechanical grabs

- BH, GH & GC range

Foundation Cranes

- SC range

Hydromill technology

- Tiger & Cougar range

Soil Consolidations

Jet Grouting (JG)

- SM range

Turbojet® (TJ)

- SR range

Bottom Feed System (BFS)

- SR range

Tunnel

Pretunnel & Tunnel consolidation

- ST range

Geothermal power

Geothermal energy system

- SM-GT range

Soil investigation

Geotechnical system

- SM-G & STM-G range

Ancillaries

Drilling accessories

- Casing oscillator, Extractor, Vibrator & Drilling tools, Concrete pump

Mud line

- Mixer, Self Priming Pump and Mud Treatment unit (SMT-500) range

Grout line

- High Pressure Pump, Agitator, Injector, Turbomixer, Cointainerized Mixing unit, Mixing Plant & Packer range

Soilmec, leading ground engineering for 40 years.

The company was established in 1969 by entrepreneur Mr. Davide Trevisani as Pali Trevisani (today known as Trevi S.p.A.).

Since its inception, Soilmec has always developed safe, innovative, cutting edge technologies and provided the construction industry the full spectrum of equipment solutions.

Soilmec equipment is used every day on jobsites all around the world for bridges, viaducts, motorways, tunnels, underground lines, railways and buildings of all types. Thanks to a constantly upgraded and broadening range of products and a greatly increased production capability, we are an established landmark in the international ground engineering field.

Soilmec has 8 manufacturing facilities (2 in Italy, 2 in the USA, in Brazil, in China, in Dubai and in India) and our extensive distribution network of agents and branch offices in 58 countries ensure a vast coverage and representation.

Soilmec, everywhere in the world

From Patagonia to Hong Kong, from Arab Emirates to Australia, from Italy to Iceland: in more than 90 countries on the 5 continents, a Soilmec machine is working, even in this moment. Over 90% of our turnover is exported to foreign markets. Everyday our equipment works in all variety of soil and climatic conditions, social contexts, languages, cultures and skills. With their robust design, our equipment is fit to work everywhere from the African desert to the American rocky canyons. The use of Soilmec equipment on jobsites all around the world day by day, tests the effectiveness of the technical solutions Soilmec has developed, under different and difficult working conditions. Each single problem encountered along the way is an opportunity to grow, improve and innovate.

Supporting customers

In over 40 years of experience, we have created a distinctive brand that customers trust. Customers are loyal to our brand because they know that they can count on a reliable product, which is safe to use, tested and checked on site. This is not all: our customers have the guarantee of complete support, from the technical training of their personnel to the after-sales assistance, from the quick supply of spare parts to problem solving, even under the most complicated circumstances. In fact, our customer service is active every day, 24 hours. A satisfied customer is our greatest reward!

Quality

UNI EN ISO 9001 certification awarded in 1990. An important goal that is not the finishing post but the bases to start from any time you want to attain higher quality standards. It is valid at the international level.

Safety

Zero accidents: another ambitious target. A constant, daily commitment to ensure a safe working environment for our personnel and safe equipment for our customers. A commitment which is not only the responsibility of our higher management and safety department but also of every trained employee.

Environment

ISO 14001 certification awarded in 1997. It certifies our system of environmental management which we consider an ongoing commitment to preserve the environment quality. We run strict controls to limit the pollution as much as possible in terms of produced waste, litter, and emitted noise.





Timeline

1969-1980

1969

RT3: Trevisani rotary drill with mechanical transmission (crane mounted).



1973

RTA-S: Trevisani truck mounted rotary rig.

EC-30: Continuous flight auger drilling rig.

1974

BHP: Crane mounted hydraulic operated kelly guided grab.

1975

JG: Soil consolidation by Jet Grouting technologies.

1978

DTH: Large diameter pile drilling.

KL 2500/KL 2700: Micropiles and anchoring hydraulic rigs.

1980-1990

1980

SM-305: Drilling rig for small diameter.

BH: Hydraulic grab, rope suspended 360° self orienting kelly guiding out of the trench.

1982

R-12: Self erecting crawler mounted hydraulic piling rig.

CM-42: Crawler mounted self erecting CFA specialized rig.

1987

The first undercarriage with expandable and removable tracks.

1989

Parallelogram: Drilling rigs with parallel translating linkage.



1990-2000

1992

RPUM: Reinforced protective umbrella method for tunnels.

1993

CAP/CSP: Cased augered and secant piles drilling rigs.

1995

CM-40: Self erecting rig, transportable with kelly in place. Self erecting counterweight.

1996

Pretunnel: Soil consolidation system for tunnel construction.

1997

Rotograb: Grab with motorization between guide bar and body.

1998

CDW: Continuous diaphragm walls, simultaneous excavation and concreting of diaphragm walls.

2000-2010

2001

TJ®: Turbojet technology for soil consolidation.

RCDS: Reverse circulation drilling system.

2005

DMS: Computerized control system for drilling equipment.

TCT: Traction compacting tool for displacement piles.

2006

VD: Vibrodrilling and vibrojet grouting technology

2007

Cougar and Tiger: hose wheel design and hose drum design hydromills.

2009

BFS: Bottom feed system for stone column method.

EJG: Elliptical jet grouting columns.

2010

APS: Automatic positioning system.

DPS: Drilling positioning system for jg technology.

Directional drilling technologies.

2012

Hydromill: 250 meter depth reach with 3200x1500 hydromill panel.

2013

Tier 4 Diesel Engines, in compliance with emission regulation standards, available for all the line products.



2015

Evolution: dedicated Kelly method drill rig.

Advance: highly flexible machine to adapt to many technologies.

High Technology: Multipurpose drilling rig optimized for all technologies.

SR - series

LDP - Large diameter piles

Model	Max diameter	Max depth	Max torque	Rated engine power	Weight
SR-20 EVO	1200 mm	40 m	114 kNm	119 kW	27 t
SR-40 EVO	1500 mm	61 m	161 kNm	180 kW	50 t
SR-60 EVO	1800 mm	71 m	201 kNm	235 kW	66,3 t
SR-80 EVO	2000 mm	77 m	271 kNm	328 kW	84,5 t
SR-30 ADV	1500 mm	49 m	130 kNm	164 kW	39 t
SR-45 ADV	1500 (2000) mm	65,5 m	185 kNm	201 kW	40,5 t
SR-75 ADV	2000 (2500) mm	76 m	292 kNm	328 kW	75 t
SR-95 HIT	2100 (3000) mm	89 m	352 kNm	403 kW	95 t
SR-105 HIT	3000 (3500) mm	92 m	452 kNm	480 kW	142 t

* Tool below mast



CFA - Continuous flight auger

Model	Max diameter	Max depth	Extraction force	Weight
SR-20 CFA EVO	750 mm	15 m	280 kN	27 t
SR-30 CFA ADV	750 mm	18,3 m	380 kN	39 t
SR-40 CFA EVO	750 (1000) mm	20 m	520 kN	50 t
SR-45 CFA ADV	1000 mm	21,5 m	480 kN	40 t
SR-60 CFA EVO	1000 mm	22 m	560 kN	62,2 t
SR-75 CFA ADV	1200 mm	27 m	984 kN	71,4 t
SR-80 CFA EVO	1200 mm	24 m	800 kN	79,4 t
SR-95 CFA HIT	1200 mm	30 m	1280 kN	92,5 t
SR-105 CFA HIT	1400 mm	31 m	1480 kN	143 t





SR - series

CAP/CSP - Cased augered and secant piles

Model	Max diameter	Max pile depth	Max cased depth	2 nd rotary torque
SR-75 ADV	1000 mm	24,3 m	18,4 m	293 kNm
SR-95 HIT	1000 mm	27,3 m	20,8 m	342 kNm
SR-105 HIT	1200 mm	28 m	21 m	452 kNm



DP - Displacement piles

Model	Max diameter	Max TCT diameter	Max pile depth	Pull down force
SR-45 ADV	350 mm	350 mm	22,7 m	240 kN
SR-75 ADV	600 mm	800 mm	30,7 m	408 kN
SR-95 HIT	800 mm	800 mm	33 m	484 kN



TJ - Turbojet®

Model	Max diameter	Max depth	Rotary speed	Extraction force
SR-45 ADV	900 mm	23,4 m	47 rpm	480 kN
SR-75 ADV	1500 mm	30,7 m	50,3 rpm	984 kN
SR-95 HIT	1500 mm	33 m	45 rpm	1000 kN





STM - SF - SR series

STM series - Truck mounted

Model	Max diameter	Max depth	Max torque	Rated engine power	Weight
STM-20	1100/1800 mm	30 m	100 kNm	119 kW	19 t
STM-30	1500/2200 mm	50 m	130 kNm	164 kW	29 t



SF series - CFA dedicated rigs

Model	Max diameter	Max depth	Max torque	Rated engine power	Extraction force	Weight
SF-50	900 mm	25 m	100 kNm	164 kW	510 kN	39 t
SF-65	1000 mm	27 m	165 kNm	205 kW	560 kN	52 t
SF-120	1200 mm	31 m	300 kNm	350 kW	1160 kN	100 t



LHR series - Low Head Room

Model	Max diameter	Max depth	Max torque	Modular mast height range
Single rotary kit	2500 mm	61 m	226 kNm	6 - 9,8 m
Double rotary kit	2500 mm	61 m	292 kNm	6 - 9,8 m
	2500 mm	61 m	292 kNm	6 - 9,8 m





SC - SA/RT3 series

SA and RT3 series - Crane attachment rotaries

Model	Max diameter	Max depth	Max torque	Min crane capacity
RT3-ST	3000 mm	40 (120) m	160 (210) kNm	40 t
SA-40	4000 mm	94 m	413 kNm	90 t



SC series - hydraulic crawler cranes

Model	Max load capacity	Max sleeve speed	Rated engine power	Weight	Max boom length
SC-40 HD	40 t @ 3,05 m	3,1 rpm	220 kW	43 t	30 m
SC-70 HD	70 t @ 3,5 m	4,5 rpm	403 kW	67 t	51 m
SC-80	72,6 t @ 3,5 m	3 rpm	205 kW	74 t	51 m
SC-90 HD	90 t @ 3,6 m	3,5 rpm	470 kW	92 t	56 m
SC-120 HD	120 t @ 3,7 m	3 rpm	470 kW	117 t	56 m

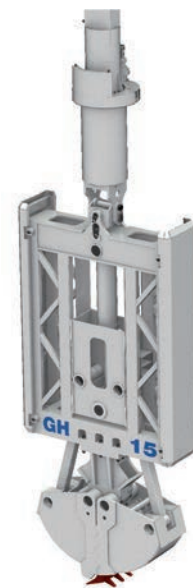




Grab and Hydromill series

BH, GH, GC and GK series - Diaphragm walls mechanical and hydraulic grabs

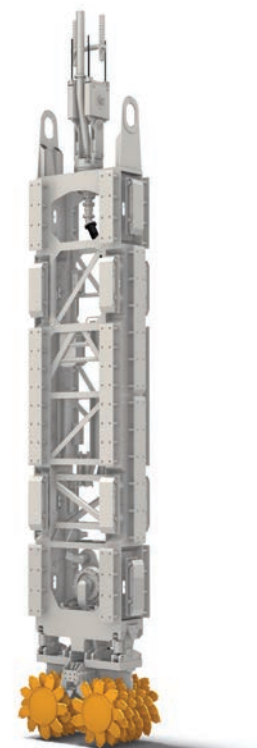
Model	Max depth	Excavation dimension (width x length)	Weight total (aprox.)
HYDRAULIC GRABS / ROTOGRABS			
BH-8 / 8R	75 m	350/800 x 2000/3200 mm	8 t
BH-12 / 12R	75 m	500/1200 x 2000/3500 mm	12 t
GH-12 / 12R	75 m	500/1200 x 2500/4200 mm	12,5 t
GH-15 / 15R	75 m	600/1500 x 2800/4200 mm	15,2 t
CABLE GRABS			
GC-11	depending on crane	500/1200 x 2500/3000 mm	11,3 t
GC-16	depending on crane	800/1200 x 2800/3500 mm	16 t
FULL GUIDED GRABS			
GK-5	31 m	400/800 x 2000/2500 mm	14 t



Tiger and Cougar series - Hydromills for diaphragm walls

Model	Hydromill module	Max cutting depth	Engine power	Machine class
COUGAR SC-100	SH-30	52 m	563 kW	100 t
COUGAR SC-135	SH-30/SH-40	61 (67) m	653 kW	135 t
TIGER SC-135	SH-30/SH-40/SH-50	100 (120) m	653 kW	135 t
TIGER SC-200 c/w P450	SH-30/SH-40/SH-50	250 m	450 + 450 kW	200 t

MODULE	Panel length	Panel width	Body length	Weight class
SH-30	2800/3000 mm	650/1000 mm	11,3 m	30 t
SH-40	2800/3000 mm	800/1500 mm	13,8 m	40 t
SH-50	2800/3200 mm	1000/2000 mm	15,5 m	50 t





SM - SMG - SMGT - ST series

SM series - MP micropiles

Model	Rated engine power	Max torque	Max hoist	Weight	JG Single passage
SM-3	85 kW	924 daNm	40 kN	3,5 + 1,5 t	8 m
SM-4	115 kW	3350 daNm	70 kN	6,1 + 3,7 t	-
SM-5	72 kW	970 daNm	40 kN	5,5 t	7 m
SM-9	105 kW	1300 daNm	60 kN	9,3 t	12 m
SM-10	116 kW	1300 daNm	80 kN	12,5 t	12 m
SM-14	119 kW	2547 daNm	89 kN	14 t	18,5 m
SM-17	160 kW	3700 daNm	120 kN	18 t	-
SM-18	176 kW	3659 daNm	113 kN	19 t	20,4 m
SM-20	129 kW	3270 daNm	83 kN	21 t	21 m
SM-21	176 kW	3660 daNm	141 kN	22 t	20 m
SM-28	194 kW	4500 daNm	175 kN	40,5 t	34 m



SM-G series - Soil investigation

Model	Rated engine power	Max torque	Max drilling speed	Max hoist	Weight
SM-5G	72 kW	700 daNm	862 rpm	60 kN	5,3 t
SM-8G	85 kW	820 daNm	926 rpm	100 kN	8,9 t
SM-16G	176 kW	1330 daNm	1100 rpm	200 kN	16,7 t



STM-G series - Soil investigation truck mounted version

Model	Rated engine power	Max torque	Max drilling speed	Max hoist	Weight
STM-8G	85 kW	820 daNm	926 rpm	100 kN	8,2 t
STM-16G	176 kW	1330 daNm	1100 rpm	200 kN	16 t



SM-GT series - Geothermal power

Model	Rated engine power	Max torque	Max hoist	Weight
SM-8GT	116 kW	816/1633 daNm	100 kN	8,9 t
SM-16GT	176 kW	1100/3200 daNm	209 kN	16 t



ST-series - Tunnel consolidation

Model	Rated engine power	Working radius at 0°	H max from ground level at 0°	Weight
ST-15	83 (o 75) kW	1880 ÷ 2550 mm	4570 mm	12,5 t
ST-20	123 + (90) kW	1700 ÷ 4696 mm	6196 mm	21 t
ST-30	143 + (90) kW	1528 ÷ 5037 mm	6787 mm	30 t
ST-60	135 + (116) kW	3700 ÷ 6500 mm	10700 mm	60 t
ST-120	164 + (2x90) kW	3600 ÷ 6600 mm	10100 mm	119 t



Concrete Line Drilling Accessories

CONCRETE PUMPS

Model	Max delivery	Max engine power	Max pressure	Dry weight
SKP-65	65 m ³ /h	90 kW	50 bar	7 t
SKP-80	80 m ³ /h	112 kW	50 bar	7,5 t
SKP-90	90 m ³ /h	112 kW	50 bar	7,8 t
SKP-110	110 m ³ /h	134 kW	50 bar	8 t
SKP-120	120 m ³ /h	134 kW	50 bar	9 t

TREMIE PIPE

Type	Nominal diameter	Components available	
Screw joint	220 mm	Hoppers	Tremie elements
Quick joint	273 mm	Hoisting plug	Shoe elements



CASING OSCILLATORS

Model	Diameter	Max extraction force	Max closing force	Max torque
VRM 100 KL	1000 mm	770 kN	500 kN	630 kNm
VRM 130 KL	1300 mm	1790 kN	1560 kN	1700 kNm
VRM 150 KL	1500 mm	1790 kN	1560 kN	1950 kNm
VRM 200 KL	2000 mm	1790 kN	1560 kN	2430 kNm
VRM 2000	2000 mm	265 kN	190 kN	3180 kNm
VRM 2500	2500 mm	515 kN	217 kN	7070 kNm
VRM 3000	3000 mm	725 kN	478 kN	8350 kNm

EXTRACTORS

Model	
ETB-20	for pipes and sheet-piles
ETB-8	for sheet-piles

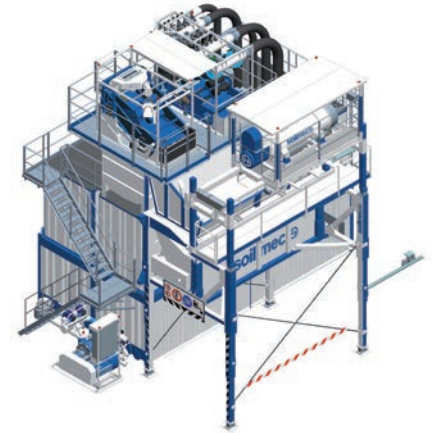
VIBRATORS

Model	Eccentricity mon.	Frequency	Centrifugal force	Max extraction force	Engine
VTH-1	8 kgm	1800 cycles/m	19600 t	10 t	71 kW
VS-4	15 kgm	1800 cycles/m	55078 t	20 t	135 kW
VS-8	30 kgm	1800 cycles/m	110156 t	40 t	277 kW





Mud Treatment System Mud Line



MUD TREATMENT SYSTEM

Model	Nominal flow rate (on water)	Max feed density	Approx. Solid separation	Scalper feeding
SMT-500	500 m ³ /h	1,25 t/m ³	200 t/h	150/100 mm
	Hydrocyclones I stage - Cut point D50	Hydrocyclones II stage - Cut point D50	Dewatering potential separation	Mud Booster Station max capacity
	60 micron	20 micron	50 to 214 micron (D50)	520 m ³ /h
	Storage capacity	Installed power	Discharge flow rate	Screw conveyor speed
SMD-35	35 m ³	39,6 kW	240 m ³ /h	17,9 rpm
Model	Structure	bowl inside diameter/length	installed power	max torque (sumitomo cycloidal gear)
SDM-90	Containerized or retractable skid	590/2200 mm	120 to 245 kW	6 to 15 kNm

STANDARD BATCH MIXERS

Model	Electric motor power	Max batch volume	Max mixing capacity	Dry weight
SBX-10	11 kW	1000 dm ³	10 dm ³ /h	700 kg

HIGH TURBOLENCE BATCH MIXERS

Model	Electric motor power	Max batch volume	Max mixing capacity	Dry weight
SGT-13 PLUS	7,5 kW	395 dm ³	12,5 dm ³ /h	845 kg
SBT-30	18 kW	1300 dm ³	30 dm ³ /h	1620 kg
SBT-30.17 (20' container silos)	22 kW	1300 dm ³	30 dm ³ /h	4860 kg
SBT-30.34 (20' container silos)	22 kW	1300 dm ³	30 dm ³ /h	6120 kg
SGT-30.51 (20' container silos)	26 kW	1300 dm ³	30 dm ³ /h	7410 kg

DESANDER

Model	Stage	Cut point	Installed power	Feeding capacity determined on water
BE-50	single	60 D50 µm	11,5 kW	50 m ³ /h
SD-70	single	60 D50 µm	15 kW	70 m ³ /h
SD-100	single	60 D50 µm	18 kW	100 m ³ /h
SD-150	single or double	60/35 D50 µm	24/48 kW	150 m ³ /h
SD-180	single or double	60/35 D50 µm	28/54 kW	180 m ³ /h
SD-250	single or double	60/35 D50 µm	48/75 kW	250 m ³ /h

SELF PRIMING PUMPS

Beta Series	Dry weight	Max delivery	Max head	Solid passage
60ET	50 kg	700 l/min	12 m	31 mm
60DS	123 kg	600 l/min	16 m	31 mm
80/2ET	96 kg	1320 l/min	20 m	38 mm
80/2DS	206 kg	1400 l/min	22 m	38 mm
100DS	349 kg	2500 l/min	19 m	44 mm
Delta Series	Dry weight	Max delivery	Max head	Solid passage
80/2ET	217 kg	950 l/min	12 m	30 mm
80/2DS	405 kg	1660 l/min	16 m	30 mm
DELTA 120/2 ET	307 kg	2000 l/min	14 m	40 mm
DELTA 120/2 DS	563 kg	2200 l/min	22 m	30 mm
DELTA 120/S ET	340 kg	3200 l/min	23 m	28 mm
DELTA 120/S DS	563 kg	4000 l/min	35 m	28 mm
DELTA 120/W ET	590 kg	2500 l/min	22 m	28 mm
DELTA 150/2 ET	375 kg	3650 l/min	13 m	38 mm
DELTA 150/2 DS	660 kg	5000 l/min	21 m	38 mm
DELTA 150/S ET	375 kg	4925 l/min	22 m	45 mm
DELTA 150/S DS	745 kg	5000 l/min	32 m	38 mm
Grinta Series	Dry weight	Max delivery	Max head	Solid passage
200ET	680 kg	8500 l/min	18 m	60 mm
200ET	1499 kg	2246 US gal/min	59 m	2 in
200DS	850 kg	9700 l/min	30 m	60 mm
200DS	1874 kg	2563 US gal/min	98 m	2 in
250ET	1710 kg	13600 l/min	48 m	-
250ET	3770 kg	3593 US gal/min	157 m	-
250DS	2065 kg	13600 l/min	48 m	-
250DS	4552 kg	3593 US gal/min	157 m	-





Grout Line

AGITATORS

Model	Mixing axis	Electric motor power	Max storage volume	Dry weight
SGA-5	1	2,2 kW	0,5 m ³	290 kg
SGA-8	1	1,5 kW	0,8 m ³	350 kg
SGA-10	1	2,2 kW	1 m ³	330 kg
SGA-10 P	1	7,7 kW	1 m ³	400 kg
SGA-17	1	2,2 kW	1,7m ³	780 kg
SGA-20	1	2,2 kW	2 m ³	790 kg
SGA-21	2	4,4 kW	2,1 m ³	850 kg
SGA-35	1	4 kW	3,5 m ³	1120 kg
SGA-45	1	5,5 kW	4,4 m ³	1500 kg
SGA-45 P	1	20,5 kW	4,4 m ³	1680 kg
SGA-55	1	7,5 kW	5,5 m ³	1610 kg
SGA-55 P	1	22,5 kW	5,5 m ³	1790 kg
SGA-100	2	11 kW	10 m ³	3000 kg
SGA-100 BP	2	41 kW	10 m ³	3600 kg
SGA-120	2	15 kW	12 m ³	3200 kg
SGA-120 BP	2	45 kW	12 m ³	3850 kg
SGA-150	2	15 kW	15 m ³	3500 kg

VERTICAL INJECTOR

Model	Electric motor power	Max delivery	Max breaking pressure	Dry weight
SGP-3.12	5,5 kW	33 dm ³ /1'	120 bar	320 kg
SGP-4.9	4 kW	40 dm ³ /1'	90 bar	370 kg
SGP-8.8	7,5 kW	78 dm ³ /1'	78 bar	400 kg
SGP-8.9	5,5 kW	82 dm ³ /1'	90 bar	510 kg
SGP-10.10	18 kW	105 dm ³ /1'	100 bar	670 kg
SGP-14.9	7,5 kW	141 dm ³ /1'	90 bar	513 kg

HORIZONTAL PUMP/INJECTOR

Model	Electric motor power	Max delivery	Max working pressure	Dry weight
SGP-20.5	22 kW	205 dm ³ /1'	50 bar	1100 kg
SGP-20.8	30 kW	205 dm ³ /1'	80 bar	1130 kg
SGP-36.3	22 kW	360 dm ³ /1'	30 bar	1210 kg
SGP-14.15	45 kW	140 dm ³ /1'	150 bar	1250 kg
SGP-20.10	45 kW	205 dm ³ /1'	100 bar	1310 kg

BATCH MIXERS - Standard

Model	Electric motor power	Max batch volume	Max mixing capacity	Dry weight
SGX-5	7,5 kW	280 dm ³	5 m ³ /h	395 kg
SGX-8	9,2 kW	520 dm ³	8 m ³ /h	500 kg
SGX-13	11 kW	1200 dm ³	13 m ³ /h	740 kg
SGX-18	15 kW	1850 dm ³	18 m ³ /h	800 kg

BATCH MIXERS - High turbulence

Model	Electric motor power	Max batch volume	Max mixing capacity	Dry weight
SGT-6	5,5 kW	265 dm ³	6 m ³ /h	300 kg
SGT-7	7,5 kW	395 dm ³	6,5 m ³ /h	345 kg
SGT-12 PLUS	5,5 kW	265 dm ³	11,5 m ³ /h	800 kg
SGT-13 PLUS	7,5 kW	395 dm ³	12,5 m ³ /h	845 kg
SGT-30	22 kW	1300 dm ³	30 m ³ /h	1650 kg
SGT-30.17	26 kW	1300 dm ³	30 m ³ /h	4890 kg
SGT-30.34	26 kW	1300 dm ³	30 m ³ /h	6150 kg
SGT-30.51	26 kW	1300 dm ³	30 m ³ /h	7410 kg
SGT-45	26,5 kW	2000 dm ³	45 m ³ /h	2020 kg
SGT-47	26,5 kW	2500 dm ³	47 m ³ /h	2110 kg



Grout Line



GROUT INJECTION PLANT - Prearranged versions: SGI series

Model	Max batch volume	Max storage volume	Electric motor power	Dry weight
SGI-2 K	200 dm ³	400 dm ³	9,2 kW	1200 kg
SGI-4 K	310 dm ³ /1'	400 dm ³	11 kW	1400 kg
SGI-4	310 dm ³ /1'	800 dm ³	14,5 kW	1480 kg
SGI-7	310 dm ³ /1'	800 dm ³	16,5 kW	1760 kg
SGI-8	580 dm ³ /1'	800 dm ³	18,2 kW	1880 kg

GROUT INJECTION PLANT - Tailor made versions: SGJ series

Model			Agitator	Mixer	Dry weight
SGJ-8x3,12 C	n,8 SGP-3,12	/	/	/	7800 kg
SGJ-8x8,8 C	n,8 SGP-8,8	/	/	/	8440 kg
SGJ-8x3/8 C	n,6 SGP-3,12	n,2 SGP-8,8	/	/	7960 kg
SGJ-6x3,12 C	n,6 SGP-3,12	/	/	/	7160 kg
SGJ-6x8,8 C	n,6 SGP-8,8	/	/	/	7640 kg
SGJ-4x20,5 C	n,4 SGP-20,5	/	/	/	7400 kg
SGJ-4x36,3 C	n,4 SGP-36,3	/	/	/	7840 kg
SGJ-4x14,15 C	n,4 SGP-14,15	/	/	/	8000 kg
SGJ-4x20,10 C	n,4 SGP-20,10	/	/	/	8240 kg
SGJ-1x3,12 KMS	n,1 SGP-3,12	/	n,1 SGA-5	n,1 SGT-6	1310 kg
SGJ-1x8,8 KMM	n,1 SGP-8,8	/	n,1 SGA-10	n,1 SGT-6	1430 kg
SGJ-1x20,5 KMM	n,1 SGP-20,5	/	n,1 SGA-10	n,1 SGT-6	2230 kg
SGJ-2x3,12 KMS	n,2 SGP-3,12	/	n,1 SGA-5	n,1 SGT-6	1730 kg
SGJ-2x3,12 K0S	n,2 SGP-3,12	/	n,1 SGA-5	/	1330 kg
SGJ-2x8,8 KMM	n,2 SGP-8,8	/	n,1 SGA-10	n,1 SGT-6	1930 kg
SGJ-2x3/8 KMM	n,1 SGP-3,12	n,1 SGP-8,8	n,1 SGA-10	n,1 SGT-6	1850 kg
SGJ-3x3,12 KMM	n,3 SGP-3,12	/	n,1 SGA-10	n,1 SGT-6	2180 kg
SGJ-3x3/8 KMM	n,2 SGP-3,12	n,1 SGP-8,8	n,1 SGA-10	n,1 SGT-6	2270 kg
SGJ-4x3,12 K0S	n,4 SGP-3,12	/	n,1 SGA-5	/	2170 kg

BATCH MIXERS - High turbulence

Model	Electric motor power	Max batch volume	Max mixing capacity	Dry weight
SGM-6	7,7 kW	265 dm ³	6 m ³ /h	930 kg
SGM-12 PLUS	7,7 kW	265 dm ³	11,5 m ³ /h	1430 kg
SGM-20	20,2 kW	1300 dm ³	20 m ³ /h	7730 kg
SGM-30	25,7 kW	2000 dm ³	30 m ³ /h	7890 kg
SGM-30,34	36 kW	1300 dm ³	30 m ³ /h	9780 kg
SGM-30,68	36 kW	1300 dm ³	30 m ³ /h	12300 kg
SGM-30,102	36 kW	1300 dm ³	30 m ³ /h	14820 kg
SGM-45	54 kW	2000 dm ³	45 m ³ /h	8950 kg
SGM-47	56 kW	2500 dm ³	47 m ³ /h	9750 kg



GROUTING HIGH PRESSURE PUMPS

Model	Max installed power	Max grout delivery	Max grout pressure	Dry weight
7T-450J	360 kW	600 dm ³ /1	650 bar	15000 kg
7T-450J	360 kW	759 dm ³ /1	650 bar	15500 kg
7T-600J	496 kW	560 dm ³ /1	650 bar	16300 kg
7T-600J	496 kW	696 dm ³ /1	650 bar	16500 kg



INJECTION PACKER

Model	Rubber pad		Max hydraulic working	Max grouting pressure	Dry weight
1 HP	40 mm	60 mm	250 bar	80 bar	3 kg
2 HP	60 mm	115 mm	250 bar	80 bar	10 kg
3 HP	80 mm	140 mm	250 bar	80 bar	22 kg

DMS

Total control over performance, production and machinery.

DMS - Drilling Mate System - is a project born in the mid-90s with the aim of providing to both operator and jobsite personnel, an active instrument to control and interact with the machine (sensors, safety devices, diesel engine, drilling parameters, etc.).

Soilmec, having perceived an upcoming electronic revolution in the field of drilling machines, used the extensive experience acquired on jobsites to develop a tool that would allow the operator to manage both machine and production.

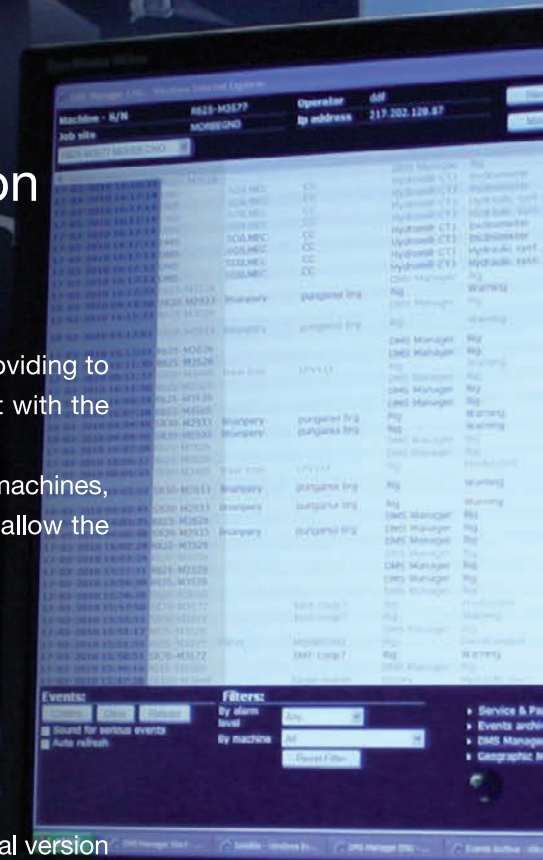
DMS is designed with the following innovative characteristics:

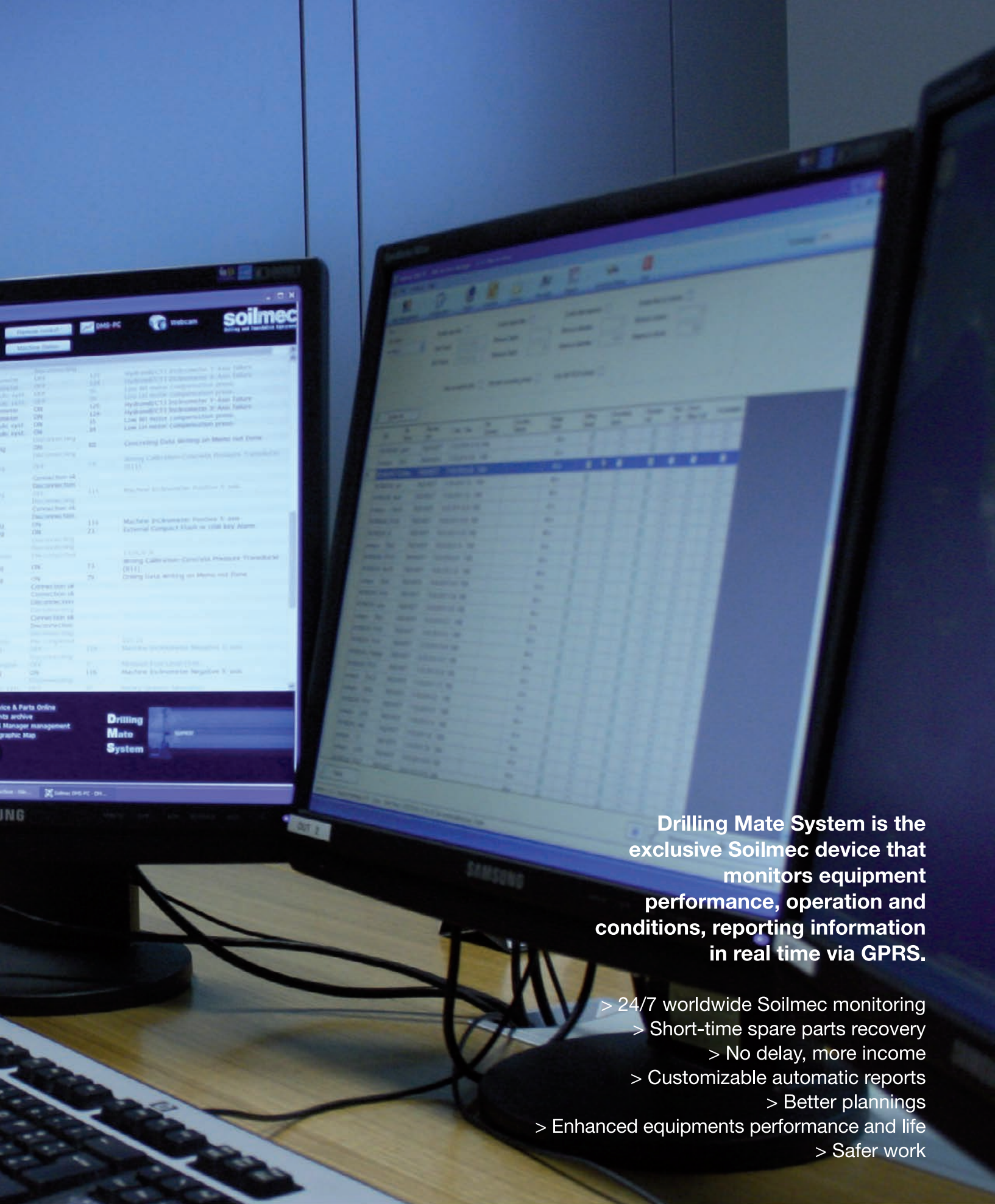
- CAN OPEN bus
- full colour touch-screen suitable for the drilling field
- Diesel engine electronic control unit and machine parameters interface
- easy of troubleshooting by the operator
- 2-PLC redundant system, for superior reliability in machine c/w electro-proportional version

Thanks to **DMS PC's** software all the data collected by the machine (drilling and concreting parameters) can be displayed and processed by a PC, in order to run jobsite reports, analyze production and processing, plan machine maintenance, etc.

DMS Manager enables to control DMS remotely via radio, GSM/GPRS, Wi-Fi or satellite, as if the operator were on board the machine. It is possible to visualize all the operation and machine parameters, map positions, and perform certain operations remotely as well as to provide support to the operator or schedule maintenance.

DMS
you will never work alone





Drilling Mate System is the exclusive Soilmec device that monitors equipment performance, operation and conditions, reporting information in real time via GPRS.

- > 24/7 worldwide Soilmec monitoring
- > Short-time spare parts recovery
- > No delay, more income
- > Customizable automatic reports
- > Better plannings
- > Enhanced equipments performance and life
- > Safer work

Soilmec DMS will increase your business

APS - DPS

APS (Automatic Positioning System) is a GPS guidance system that integrates in real-time the topography positioning coordinates and the dialing control parameters of each machine.

Visualization and storage

- Drill position in the drilling spot in the site layout
- probe vertical/tilted position check
- Exact start and end position of treatment
- Spots to be drilled and already treated

Advantages

The GPS satellite positioning solution offers the following advantages:

- Manual positioning of the probe on the spot is no longer required
- The operator is guided directly to the designated drilling spot in a precise, easy and quick way without human error
- Each function can be controlled through a display mounted on the rig
- Only one integrated monitor for both drilling and positioning

The **DPS (Drilling Positioning System)** was developed in order to control the drilling positions, before executing jet grouting columns.

This control is of basic importance in the execution of bottom plugs and deep waterproofing shields.

Advantages

The DPS is assembled on the monitor bearing the nozzles, with consequent drilling depth saving and minor wears.

The DPS takes inclination measurements within a range of $\pm 60^\circ$, compared to the vertical line.

The DPS transmits the data by means of Bluetooth technology.

The DPS is powered by an inside battery with a full charge duration of 180 hours in long life mode (automatic ignition only during the drilling stop phase) and 50 hours in continuous mode (continuous data recording while drilling).

The DPS guarantees working pressures at 500 bar for the cement slurry, with an inside passage of 25 mm and at 20 bar for the air, with a delivery of 20.000 l/m.

The DPS battery can be easily replaced and is charged with a special recharger.

After Sales

Side by side with the customer.

Over the course of their 40 years of operating experience Soilmec has created a recognisable brand that customers can rely on, knowing that they can count on a safe, dependable product that has been thoroughly tested on-site. What's more, customers benefit from a full assistance service, from first contact to technology sharing, from purchasing the equipment to on-site operating, from product personalisation to staff training packages. Our after sales service is unrivalled, with customer services available 24/7, spare parts delivered in record time, problems solved in any situation, even in the most complicated circumstances.

Because a satisfied customer is our greatest reward.

Spare Parts Online Centre (SPOC)

The innovative technical web site of Soilmec S.p.A. has been published with the aim to give Soilmec Dealer Network continuous updated information regarding products and equipments, for a better interaction with Customers.

Infact, SPOC (Spare Parts Online Center) offers the following online features:

- downloading of machine manuals (operation and maintenance, wiring diagrams, hydraulic schematics, DMS, transportation, etc.)
- online ordering
- control of the availability of spare parts on the various stocking warehouses of Soilmec's worldwide network

For After Sales Service enquiries, please contact:

aftersales@soilmec.it

As part of Soilmec Dealer Network, you will be given your personal credentials by Soilmec After Sales Dept. (service available only for Soilmec branches, dealers and agents).

Tel: +39 0547 319374

Fax: +39 0547 318548



Network

Headquarter:

SOILMEC S.p.A.
Drilling and Foundation Equipment
5819, via Dismano
47522 Cesena (FC) - Italy
tel. +39.0547.319111
fax +39.0547.318548
web site: www.soilmec.it
e-mail: soilmec@soilmec.it

SOILMEC FRANCE S.A.S.
Boîte Postal 820, Le Buisson 27600
Saint Aubin sur Gaillon - FRANCE
tel. +33 232 533126
fax +33 232 538889
soilmec@soilmec.fr
www.soilmec.fr

SOILMEC LTD
New Lodge, Polebrook, Oundle
Peterborough PE8 5LL - U.K.
tel. +44 1832 274602
fax +44 1832 274677
info@soilmec.co.uk
www.soilmec.co.uk

SOILMEC
DEUTSCHLAND GmbH
4, Kupferstrasse
57489 Drolshagen - DEUTSCHLAND
tel. +49 (0) 2763 212269 0
fax +49 (0) 2763 212269 99
kontakt@soilmec.de
www.soilmec.de

REPRESENTATION
SOILMEC S.P.A.
Derbenevskaya street 1, office 31
Moscow 115114 Russia
tel. +7 499 235 89 52 / 35 63
fax +7 499 703 05 13
macus@dol.ru
www.soilmec.su

SOILMEC
NORTH AMERICA INC.
18320, Imperial Valley Drive
Houston - TX 77060 - U.S.A.
tel. +128 188 50777
fax +128 188 14572
www.soilmecna.com

SOILMEC DO BRASIL S.A.
Rodovia Bunjiro Nakao, 52.800
CEP 06726-300
Cotia SP
tel. +55 11 41542254
comercial@soilmec.com.br
www.soilmec.com.br

SOILMEC COLOMBIA S.A.S.
Calle 93B, #18-12,
Edif. Chicó Business Park, Ofic. 308
Bogotá - COLOMBIA
tel. +571 6 360990
d.panzavolta@soilmec.it

SOILMEC FOUNDATION
EQUIPMENTS PRIVATE LTD
G 7/8, Kothari Compound,
Opp. Tikuji-ni-wadi - Manpada, Thane
Mumbai 400 607 - INDIA
tel. +91 22 25899022/25899241
fax +91 22 25893331
soilmec@soilmecindia.in
www.soilmecindia.co.in

SOILMEC MISR S.A.E. Co.

St.no.N90, Down Town
Bldg. n.3, Floor n.1, Office n.9,
5th Settlement
New Cairo - EGYPT
tel. +20 2 2736301/2/3
fax +20 2 2736304
soilmec@soilmecmiser.com

SOILMEC ALGERIA

17, Rue Djurdjura, El Mohammadia
Alger - ALGERIE
tel. +213 218 26042
fax +213 218 26042
www.soilmec.fr

SOILMEC GULF FZCO

Warehouse No. RA08NC04
P.O.Box 18301 Jebel Ali
Dubai - U.A.E.
tel. +971 4 8833666
fax +971 4 8833667
soilmec2@emirates.net.ae

SOILMEC EMIRATES LLC

Off. N. 212, Al Wasl Bldg,
Jumeirah Road
The Government of Dubai
Real Estate Dept.
P.O. Box 49986 - Dubai - U.A.E.
tel. +971 4 3451881
fax +971 4 3451886
soilmec@emirates.net.ae

SOILMEC ARABIA LLC

Al Youssuf Plaza El Mandab Street
Al Hammra, District 1, P.O.Box 1553
21441 Jeddah - SAUDI ARABIA
tel. +966 26646694 / 6259
fax +966 26646690
info@soilmecarabia.com
www.soilmecarabia.com

**SOILMEC
FAR EAST PTE. LTD**

72, Joo Koon Circle,
629090 - SINGAPORE
tel. +65 8622633
fax +65 8612788
sales@soilmecfareast.com
www.soilmecfareast.com

SOILMEC HONG KONG LTD

Unit 106, 1st floor, Mirror Tower
61, Mody Road - Tsim Sha Tsui East,
Kowloon - HONG KONG
tel. +852 21560963/1
fax +852 21560962
sales@soilmechk.com
www.soilmechk.com

SOILMEC JAPAN CO LTD

Sunbird Bldg. 3F,
3-12 Kobunacho,
Nihonbashi Chuo - Ku,
103-0024 Tokyo - JAPAN
tel. +81 356431271
fax +81 336646451
info@soilmec-j.com

**SOILMEC Wujiang Machinery
Co. LTD**

1268, Yunli Road, Wujiang
Economic Development Zone
Jiangsu 215200
Wujiang - P.R. CHINA
tel. +86 512 63165838/5808
fax +86 512 63165966

**SOILMEC AUSTRALIA
PTY LTD**

19, Precision Place
Mulgrave, NSW 2756 - AUSTRALIA
tel. +61 (0)2 41755 0184
fax +61 (0)2 4587 8811
info@soilmecaustralia.com.au
www.soilmecaustralia.com.au

**SOILMEC SINGAPORE
PTE. LTD.**

101B Pioneer Road ñ Tuas
639607 Singapore
Ph. +65 6863 2082/83
Fax +65 6863 9055
soilmec.singapore@soilmec.com

For further information...

If you would like further information about our company, products or services, please don't hesitate to get in touch. You can do this in a number of ways...

- For information, please visit our website	www.soilmec.com
- For sales, please call our sales department	+39 0547 319111
- For our after sales service, please call This service is available to customers 24 hours a day, seven days a week.	+39 0547 319374
- For spare parts, you can order via our Spare Parts Online Centre or by telephone on	+39 0547 319286
Or email us and we will ensure an appropriate person responds to your inquiry as soon as possible.	soilmec@soilmec.it